

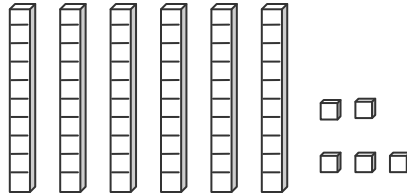
	8	6	5	2	1
+ 4					

CYCLE 4

Numeracy	1
Patterns	2
Measurement	3

1

Circle the number.



56

65

2

What comes next?

• •• ••	• ••	•	• •• ••	• ••	•	• •• ••	
5	3	1	5	3	1	5	

3

I use a _____ to find the height of a flower.



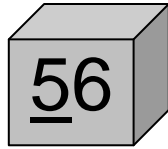
	10	9	16	17	11
- 8					

CYCLE 4

Numeracy	4
Vocabulary	5
Geometry	6

4

Circle the value of the underlined DIGIT.



50

5

5

A clock shows time in _____ .

degrees metres minutes grams

6



This is a _____ .

rectangle triangle square

	7	8	2	0	4
+ 2					

CYCLE 4

Numeracy	7
Time / Money	8
Symmetry / Mapping	9

7 Sam is the *FIRST* bear in line. _____ is the *FOURTH* bear.



Sam



Joe



Inez

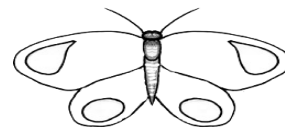


Annie

8 January has _____ days.
The first day of the month is _____ January.

JANUARY						
Sunday	Monday	Tuesday	Wednesday	Thursday	Friday	Saturday
	1	2	3	4	5	6
7	8	9	10	11	12	13
14	15	16	17	18	19	20
21	22	23	24	25	26	27
28	29	30	31			

9 Draw the LINES OF SYMMETRY.



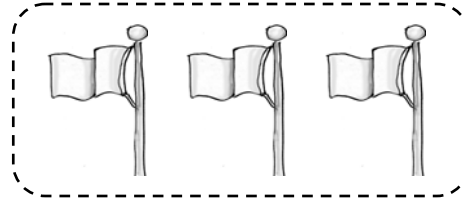
	12	3	8	9	5
- 3					

CYCLE 4

Numeracy	10
Algebra	11
Data Analysis	12

10

Colour $\frac{1}{3}$.
one third



11

What number is the ∇ ?


$$7 + \nabla = 13$$




∇ is _____.

12

Use the graph.

SUNNY DAYS IN MARCH, APRIL AND MAY

 = 2 sunny days

March	
April	
May	

There were _____ sunny days in April.

	6	0	7	10	8
+ 9					

CYCLE 4

Basic Operations	13
Problem solving	14

13

Find the SUM.

$13 + 4 =$

Check using subtraction.

$_____ - _____ = 13$

14

DRAW A PICTURE TO SOLVE.

7 students are sitting in the second row at the school play.

There are 3 more students than that in the front row.

How many students are in the front two rows at the play?

There are _____ students in the front two rows.