

	10	7	5	2	8	0	3	9
+ 7								

CYCLE 4

Whole Numbers	1
Place Value	2
Number Sense	3
Basic Operations	4
Fractions	5



Order the numbers from LEAST to GREATEST.

4 691 5 691 4 619

_____ , _____ , _____



In the number 32 974, what DIGIT is in the:

- a) *tens place* _____
- b) *thousands place* _____
- c) *ones place* _____
- d) *hundreds place* _____
- e) *tens of thousands place* _____



Round each number to the nearest thousand.

- a) 6 988 b) 3 641 c) 3 876

a) _____

b) _____

c) _____



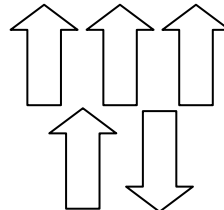
Use a strategy to find the PRODUCT.

Show how you worked it out.

$$40 \times 9 =$$



What FRACTION of the arrows is pointing down?



	18	16	10	15	11	13	17	12
- 3								

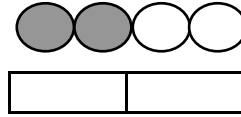
CYCLE 4

Fractions	6
Decimals	7
Patterns	8
Vocabulary	9



a) What FRACTION is represented by the shaded ovals?

Shade the figure to show the same value.

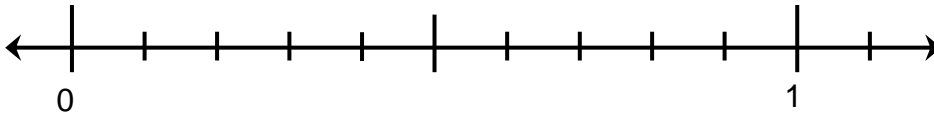


b) Fill in the answer boxes to show EQUIVALENT FRACTIONS.

$$\frac{\square}{4} = \frac{\square}{2}$$



Locate 0.7 on the number line.



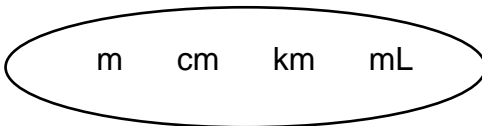
Continue the sequence.

5, 8, 11, _____, _____, _____

The rule is _____.



Put the abbreviation with its word.



- a) kilometre _____
- b) millilitre _____
- c) metre _____
- d) centimetre _____

	3	7	9	11	2	12	5	6
x 4								

CYCLE 4

Algebra	10
Geometry	11
Geometry	12
Measurement	13
Measurement	14



Write a NUMBER SENTENCE for:

*There are 24 bottles of fizzy drink in a case.
How many bottles are there in 3 cases?*

HINT: These are number sentences:
 $4 + 3 + 5 = 12.$
 $5 \times 4 = 20$



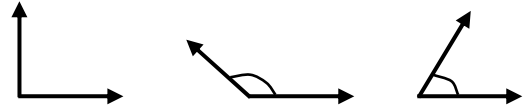
A square has _____ equal SIDES.

A square has _____ ANGLES.

Draw a SQUARE .



Circle the angle that is GREATER THAN A RIGHT ANGLE.



HINT:

These are a RIGHT ANGLES.



They are often shown like this.



2 metres is the same as: a) _____ centimetres b) _____ millimetres.

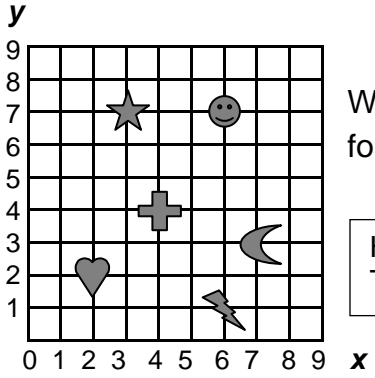


How much money does Rawiri have if he has two \$1-coins, three 50¢-coins and four 10¢-coins?

	16	8	24	20	12	18	14	6
$\div 2$								

CYCLE 4

Position	15
Statistics	16
Probability	17

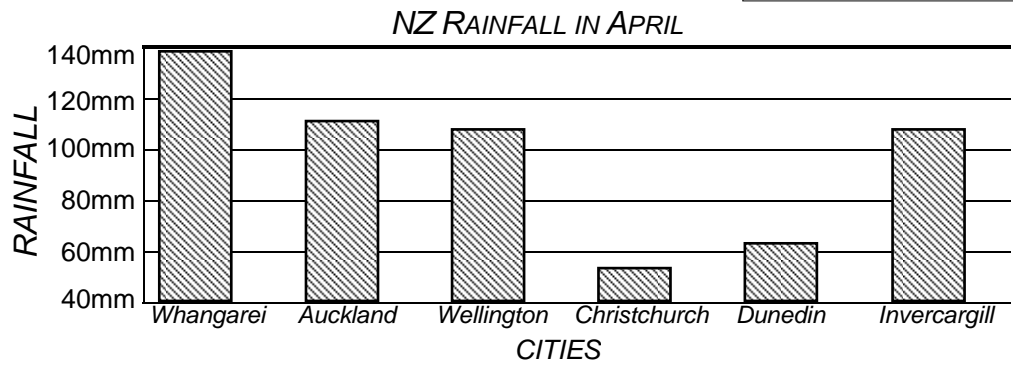


What are the COORDINATES for the heart on the graph?

HINT: The coordinates for the lightning bolt is (6,1). The x-axis is always first and the y-axis is second. (x , y)



Which New Zealand cities had rainfall of over 80mm in April?



It is (*certain, likely, unlikely, impossible*) that the next car you will see will have four doors.

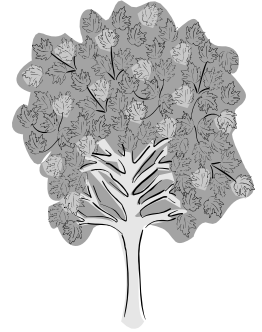
Strategies

- Guess and check
- Look for a pattern
- Draw a picture or diagram
- Make a table or list
- Work backwards
- Write a number sentence / equation
- Break the problem into smaller parts

**TREES ALONG
THE PATH**

There are four trees in a row along the 10 m path to the school.

- The totara is between the kauri and the rimu.
- The rimu is between the totara and the kowhai tree.
- The kauri is the tree closest to the school.



Which tree is furthest from the school?